

Fluidline Components, Inc.
 638 S Rochester Road
 Clawson, MI 48017
 Phone 248-583-9070

Features

3-Way & 4-Way Valves

Several Styles and Options

3-Way or 4-Way Configurations. 2-and 3-position configurations.

Numerous Actuator Styles

<u>Manual</u>	<u>Mechanical</u>	<u>Electric</u>	<u>Pneumatic</u>
Hand Lever	Cam Stem	Single Solenoid	Pilot
Palm Button	Roller Cam	Double Solenoid	Bleed
Pedal			
Treadle			

Many Performance Features

Buna-N spool seals are standard. Viton seals are available for high temperature applications. Consult the factory for ordering information.

The E Series Valve has a low profile. An extruded aluminum body provides excellent durability and lighter weight.

An External Solenoid Supply Port allows service in low pressure applications. This requires a #116153 plug Kit. See Page 56 for operation and ordering information.

Solenoid Override

Manual locking override is standard on solenoid models. Turn override to operate.

Solenoid override is a convenient means to set-up and trouble shoot circuits. Air pressure at the solenoid exhaust will also override the solenoid.

Coils

Coils are UL and CSA Listed (Files: UL #MH13513; CSA #LR51090).

Performance Specifications

Pressure Ranges:

<u>Manual Actuators</u>	Min. Pilot Press	
	PSI (Bar)	PSI (Bar)
Manual, Spring, and Spring Centered Returns:	20-150 (1.4-10.2)	30 (2)
<u>Mechanical Actuators</u>		
Manual, Spring, and Spring Centered Returns:	20-150 (1.4-10.2)	30 (2)
<u>Electric Actuators</u>		
Spring Return	30-150 (2-10.2)	
Spring Centered Return	35-150 (2.4-10.2)	
Solenoid Return	20-150 (1.4-10.2)	
<u>Pneumatic Actuators</u>		
Pilot/Spring Return	20-150 (1.4-10.2)	30 (2)
Pilot/Spring Centered	20-150 (1.4-10.2)	35 (2.4)
Pilot/Pilot Return	20-150 (1.4-10.2)	15 (1)
Bleed/Spring Return	20-150 (1.4-10.2)	
Bleed/Bleed	20-150 (1.4-10.2)	

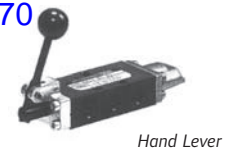
Flow: 26 SCFM

Cv Factor: .70 Cv

Temperature Ratings: -10° to 180° F (-23° to 82° C)

Weight: Solenoid Valves 1.8 to 3.4 oz. (.82 to 1.5 g)
 Non-Solenoid Valves .7 to 1.3 oz. (.32 to .6 g)

Lubrication: Valves use O-ring seals. For maximum performance and life expectancy, standard air line lubrication should be used.



Hand Lever



Palm Button



Pedal



Treadle



Cam Stem



Roller Cam



Solenoids



Pilot



Bleed

Ordering

E X X 2 XX - XXX - X

E Series Valves

Valve Type

Code	Description
1	2 Position Detent
2	2 Position
3	3 Position Spring Centered
5	3 Position Detent (3 & 5, all ports blocked)
6	3 Position Detent (inlet ports blocked, cylinder ports open)
7	3 Position Spring Centered (6 & 7, inlet ports blocked, cylinder ports open)

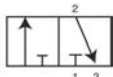
Body Style

Code	Description
1	4 Way Side Ported
4*	4 Way Bottom Ported
5	3 Way Side Ported

*Solenoid and Pilot Models only.

Port Size

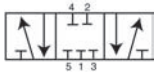
Code	Description
2	1/4" NPT



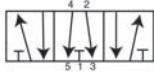
3-Way



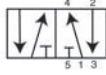
4-Way, 2-Position



4-Way, 3-Position all ports blocked



4-Way, 3-Position inlet ports blocked, cylinder ports open



4-Way, 2-Position Bleed Valve

Current Type

Code	Description
A	AC
D	DC
N	No Coil

Required only on Solenoid Valves.

If coil option A or D is selected, a coil connector must be ordered. See Pg. 79 for coil & connector information.

Coil Voltage

Code	Description	Code	Description
000	No Coil	024	24V (AC or DC)
005	5V (AC or DC)	120	120V (AC or DC)
012	12V (AC or DC)	240	240V AC

Required only when ordering Solenoid Valves.

Actuator / Return

Code	Actuator/Return
BD	Bleed Double
BS	Bleed/Spring
CS	Cam Stem/Spring
US	Cam Stem/Spring, 1/4" Spool travel, 3-way valve only.
RS	Roller Cam/Spring
HM	Palm/Manual
HP	Palm/Pilot
HS	Palm/Spring
WM	Palm w/o Button/Manual
WP	Palm w/o Button/Pilot
WS	Palm w/o Button/Spring

Actuator / Return

Code	Actuator/Return
LM	Hand Lever/Manual
LP	Hand Lever/Pilot
LS	Hand Lever/Spring
PD	Pilot/Double
PS	Pilot/Spring
SD	Double Solenoid
SN	Solenoid/Spring-N.O.
SS	Solenoid/Spring
FS	Pedal/Spring
TM	Treadle/Manual
TS	Treadle/Spring

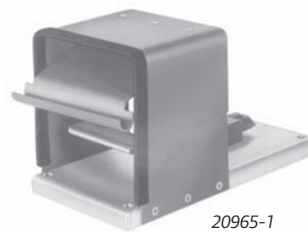
Numbering ends here if a Non-Solenoid Valve is being selected.

Accessories

Palm Buttons

For use with **WM**, **WP** or **WS** Actuators.

13111	Plastic, Black
119243	Metal, Plain
119244	Metal, Red
119245	Metal, Green
MP3651-7	Plastic, Red

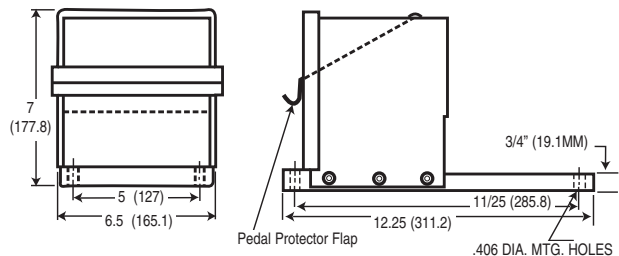


20965-1

Foot Pedal Guards

Recommended for applications where accidental actuation may result in damage or injury. Model 20965-1 is designed to comply with ANSI No. B11.1-1971 specifications and OSHA regulations.

20965-1	Pedal Guard with Flapper
20965-2	Pedal Guard without Flapper

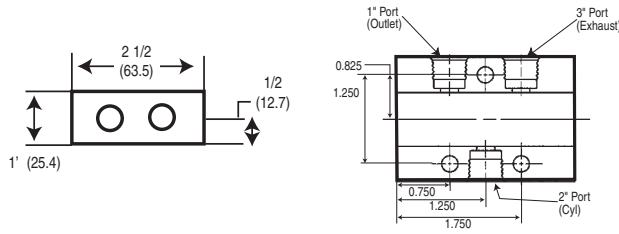


NOTE: Not for use with treadle actuator

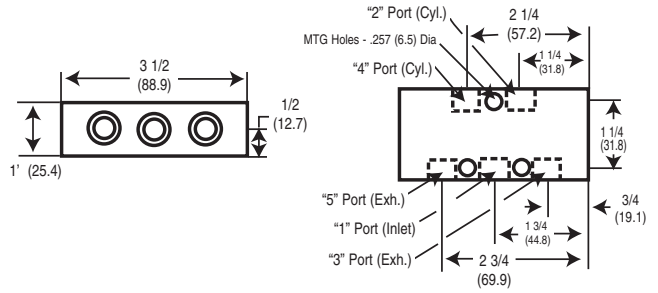
Dimensional Data

Dimensions given in Inches and (Millimeters)

Basic 3-Way Valve

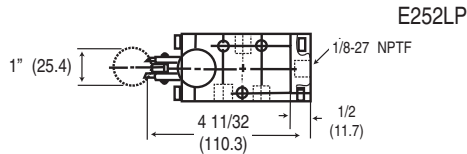
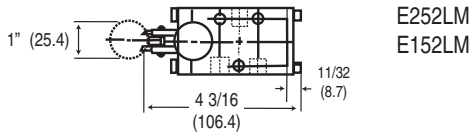
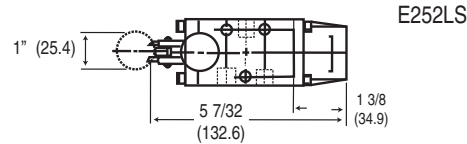
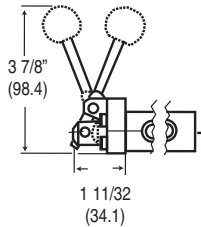


Basic 4-Way Valve

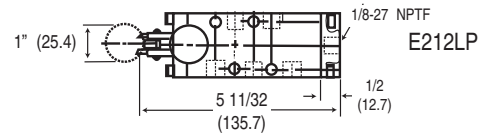
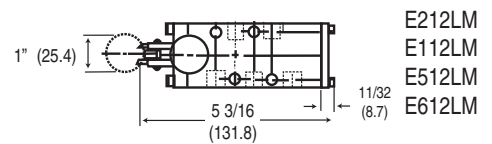
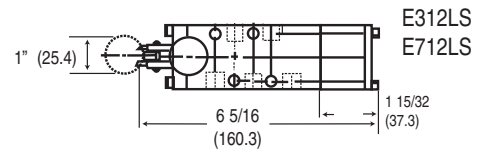
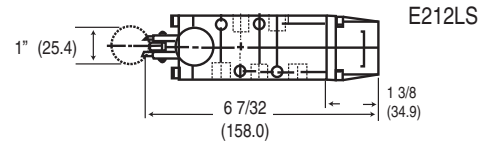


Hand Lever Valves

3 Way Valves

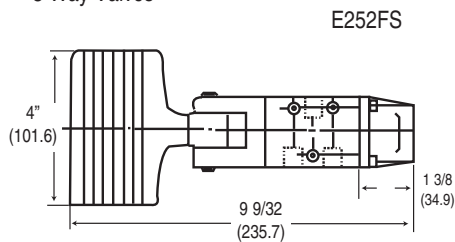


4 Way Valves

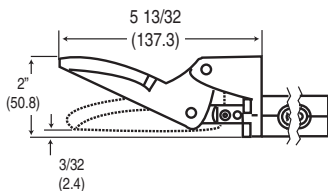
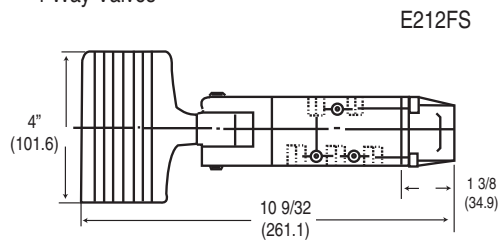


Pedal

3 Way Valves



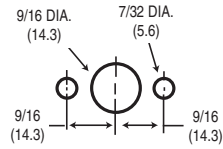
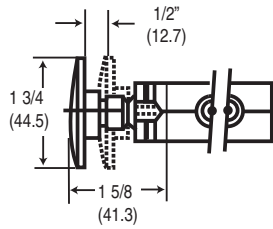
4 Way Valves



Dimensional Data

Dimensions given in Inches and (Millimeters)

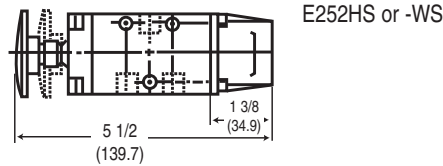
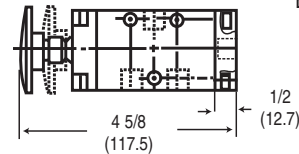
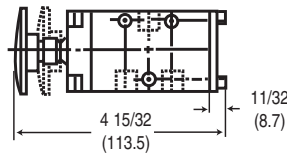
Palm Button Valves



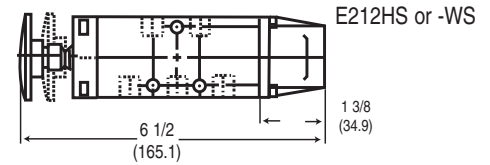
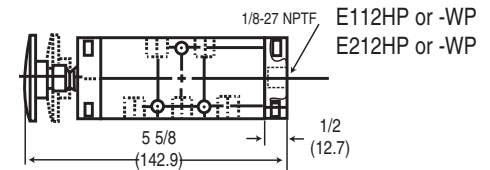
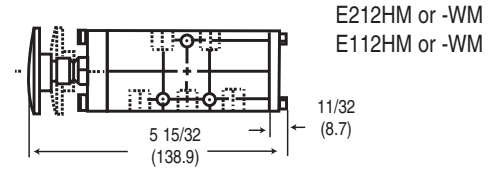
Palm Button Valves may be panel mounted. 1/8" Max. panel thickness utilizing two 10-24 UNC tapped holes in end cap

Not Available on detent models:
E152HM or -WM
E112HM or -WM

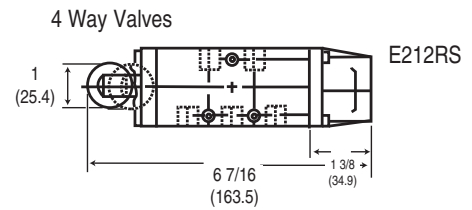
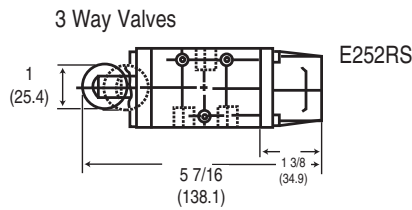
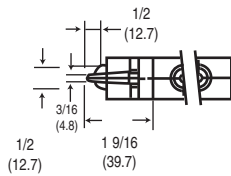
3 Way Valves



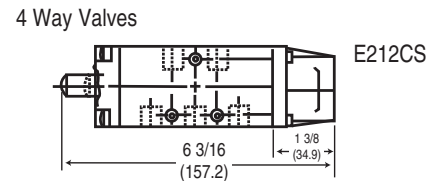
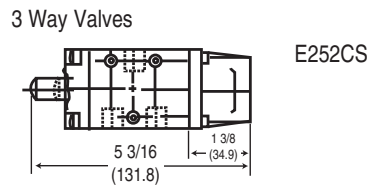
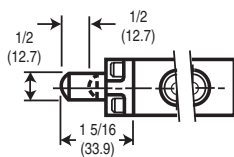
4 Way Valves



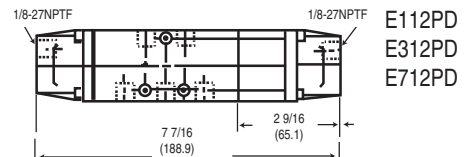
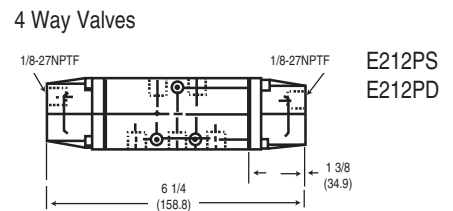
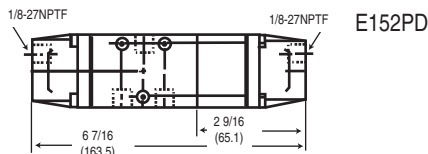
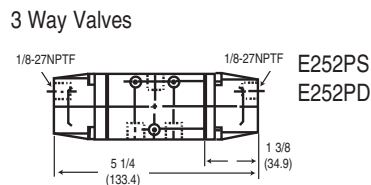
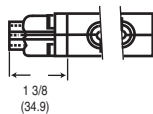
Roller Cam Valves



Cam Stem Valves



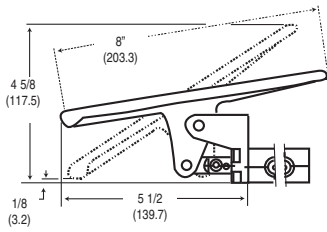
Pilot Valves



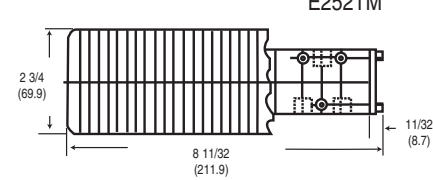
Dimensional Data

Dimensions given in Inches and (Millimeters)

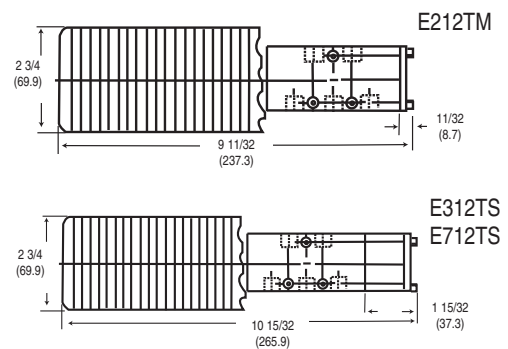
Treadle Valves



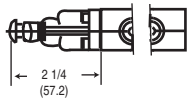
3 Way Valves



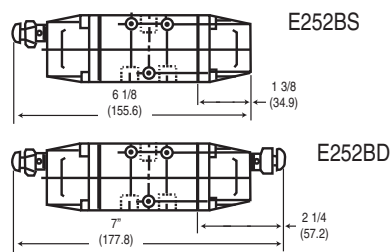
4 Way Valves



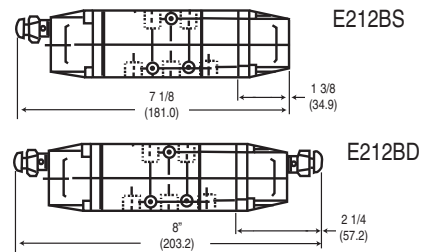
Bleed Valves



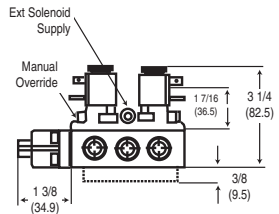
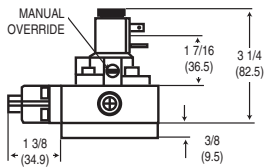
3 Way Valves



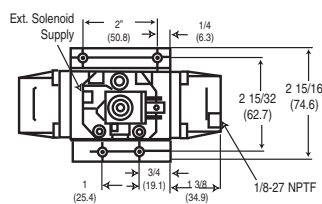
4 Way Valves



Solenoid Valves

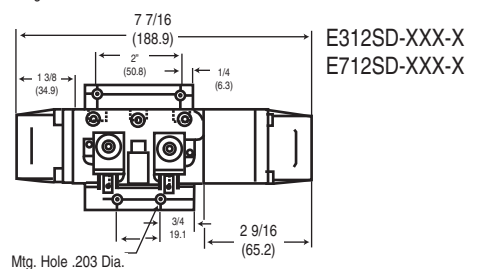
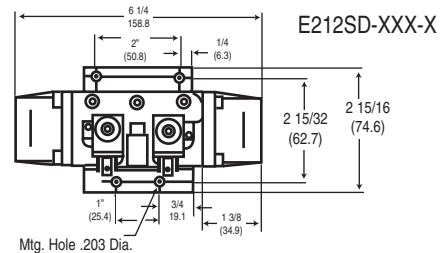
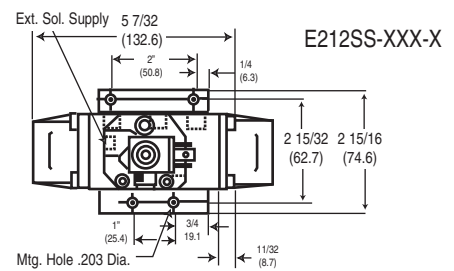


3 Way Valves



E252SN-XXX-X
E252SS-XXX-X

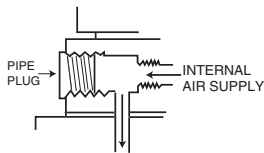
4 Way Valves



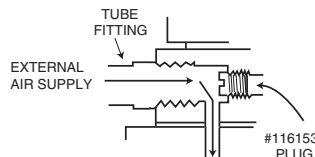
Accessories

116153 Plug Kit

Kit needed for low pressure applications requiring an external Solenoid Supply Pressure. To use, remove and discard the standard pipe plug in the solenoid base. Thread the Plug/O-ring assembly into the threaded port. This blocks the internal supply connection. Finish by connecting an external air supply to the 1/8 NPTF port.



SOLENOID VALVE
W/INTERNAL SOLENOID SUPPLY
FROM VALVE BODY AS SHIPPED



CONVERTED SOLENOID VALVE
W/EXTERNAL SOLENOID SUPPLY
CONNECTION

Distributed By:

Fluidline Components, Inc
638 S Rochester Road
Clawson, MI 48017
Phone 248-583-9070